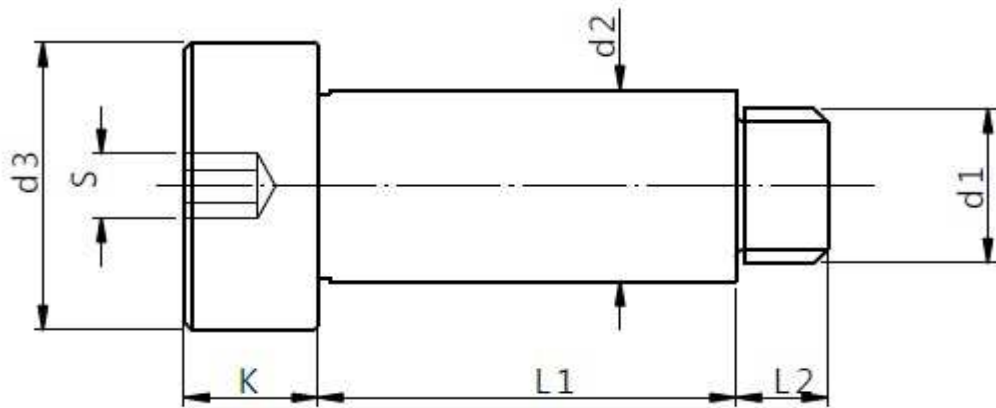


# VITI A COLLETO CON GAMBO RETTIFICATO ISO 7379

## SHOULDER SCREWS WITH GROUND SHAFT ISO 7379



Mat.: ISO 12.9

Tol. d2 h8

d3	8	10	13	16	18	24	30	36
k	4	4,5	5,5	7	9	11	14	16
L2	8	9,5	11	13	16	18	22	27
S	2,5	3	4	5	6	8	10	12
d1	M4	M5	M6	M8	M10	M12	M16	M20
d2 in "h8"	5	6	8	10	12	16	20	24
L1								
10	√	√	√					
12	√	√	√					
15	√	√	√	√	√			
16	√	√	√	√	√			
20	√	√	√	√	√			
25	√	√	√	√	√	√		
30	√	√	√	√	√	√	√	
35	√	√	√	√	√	√	√	
40	√	√	√	√	√	√	√	√
45	√	√	√	√	√	√	√	√
50	√	√	√	√	√	√	√	√
55		√	√	√	√	√	√	√
60		√	√	√	√	√	√	√
65		√	√	√	√	√	√	√
70		√	√	√	√	√	√	√
80		√	√	√	√	√	√	√
90			√	√	√	√	√	√
100			√	√	√	√	√	√
110				√	√	√	√	√
120				√	√	√	√	√
140					√	√	√	√
160						√	√	√
200						√	√	√